

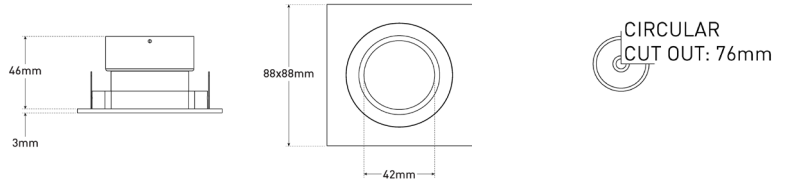
MAGNO-SQ - Fixed Magnetic Downlight



Description

Architectural square downlight featuring an anti-glare baffle and magnetic lamp change mechanism. The recessed light source serves to minimise glare. The fixture is available in a variety of finishes.

Dimensions



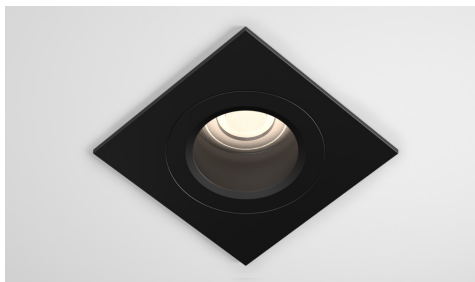
Specification

Suggested Light Source	GU10: DYNA, DYNA-LUX ENGINE: DIABLO Range
Construction	Aluminium Frame / Magnetic Suspension
Lamp Change	Magnetic Lamp Change Mechanism
Power Consumption	Variable Light Source - LED Module / GU10
Voltage	Max. 240V
Tilt	Fixed
Rotation	Fixed
Cutout	76mm - Circular
Anti-Glare	Yes
IP Rating	IP20
Finish	Solid Colours - Epoxy Powder Coat; Metallic Finishes - Electroplated

Finishes



ALL WHITE (RAL9016)



BLACK (RAL9005)



CHROME



SATIN CHROME