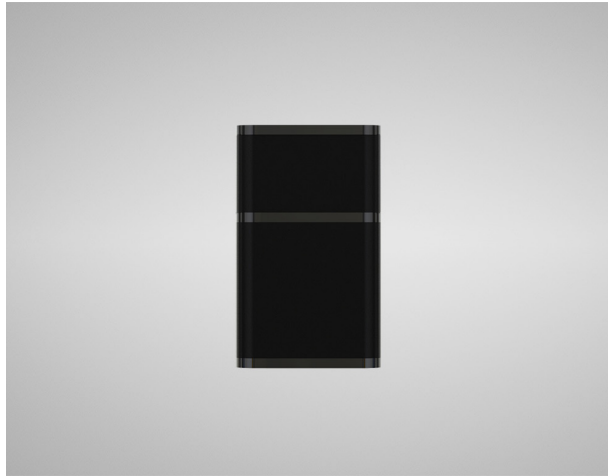


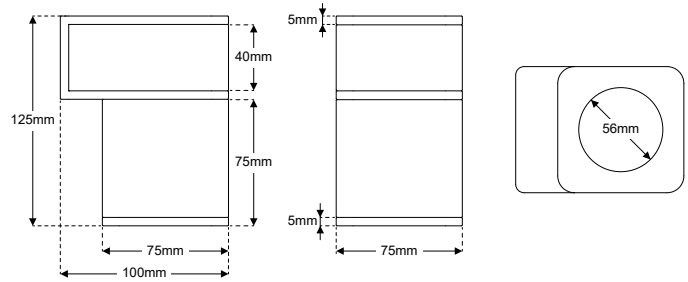
TOWER-1 - Designer Down Only Wall Light



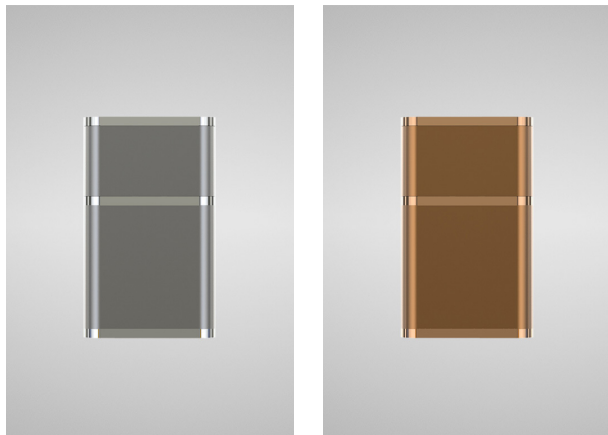
Description

Surface mounted designer wall light with downwards light distribution. Constructed from Aluminium Alloy and rated to IP65. Available in Anodised Black, Stainless Steel and Copper finishes. Compatible with OSP's GU10 lamps.

Dimensions



Finishes



SS (Stainless Steel)

CP (Copper)

Specifications

Light Source	DYNA, DYNA-LUX
Voltage	240V
IP Rating	IP65
Material	Aluminium Alloy
Installation	Surface Mounted
Finish	Anodised Black, Stainless Steel, Copper

Product Coding Example: TOWER-1-BL

CODE	FINISH
TOWER-1	BL (Anodised Black)
	SS (Stainless Steel)
	CP (Copper)