

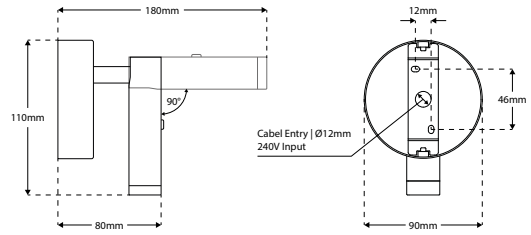
RHONE - Adjustable Wall Light



Description

Adjustable surface mounted wall light with a 3W LED chip, 90° tilt and 330° rotation allows for easy direction of light. Available in Polished Stainless Steel and Brushed Bronze and integrated ON/OFF switch provides ease of use. *\*Driver inclusive with product purchase.\**

Dimensions



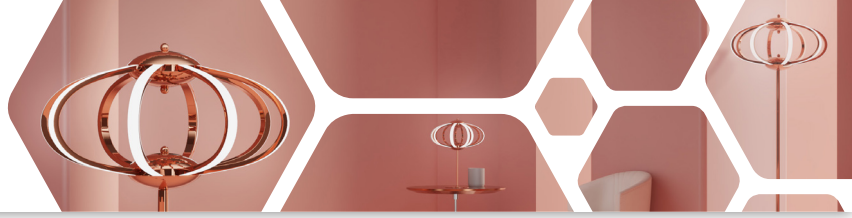
Specification

Power	3W
Current	700mA
Voltage	220-240V
Colour Temperature	3000K
Lumens	160 Lm
Lumens Per Watt	53 Lm/W
CRI	>80
Rotation	330°
Tilt	90°
Driver	Integral
Dimming Options	Switched
Chipset	LED Chipset
IP Rating	IP20
Weight	0.4kg
Finish	Stainless Steel, Brushed Bronze

Colourmetrics

3000K

R1	R2	R3	R4	R5	R6	R7	R8
80	90	97	78	79	87	83	60
R9	R10	R11	R12	R13	R14	R15	
14	77	75	73	82	98	74	



Finishes



POLISHED STAINLESS STEEL



BRUSHED BRONZE