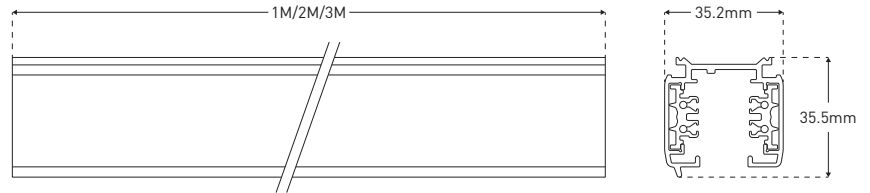
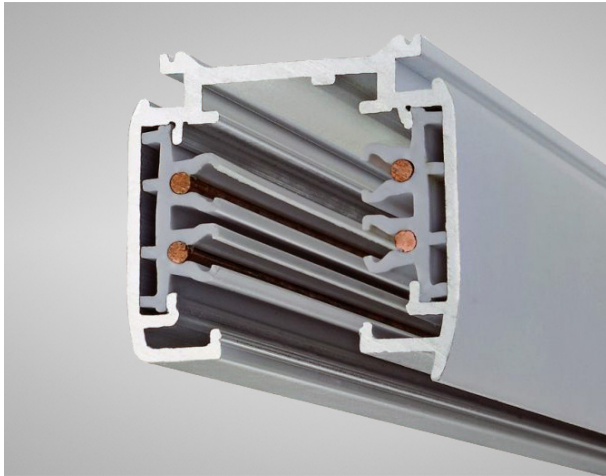


ORLTL-TRACK - ORLTL Standard Track

Description

Standard track for Orlight's ORLTL range. This track features Aluminium construction and is finished in Black RAL9011 or White RAL9010. This track can be surface mounted or can be suspended with the use of Orlight's surface mounting kit.

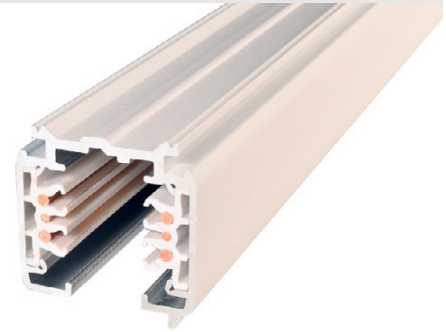
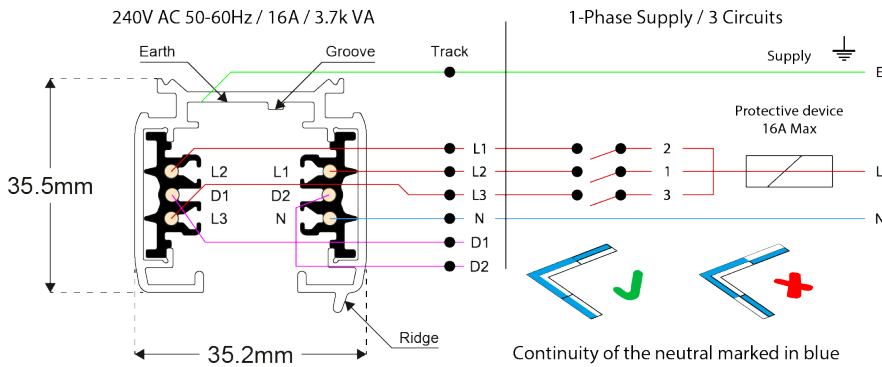
Dimensions



Specifications

Voltage	230V / 16A
Installation	Surface, Suspended
Length	1M, 2M, 3M
IP Rating	IP20
Material	Aluminium
Finish	Black RAL9011, White RAL9010

Electrical Connections



The track can be cut to length by the installer if required

Fixing Holes

L (mm)	A (mm)	B (mm)	C (mm)	D (mm)
1000mm	125			
2000mm	125	998		
3000mm	125		914	1167

