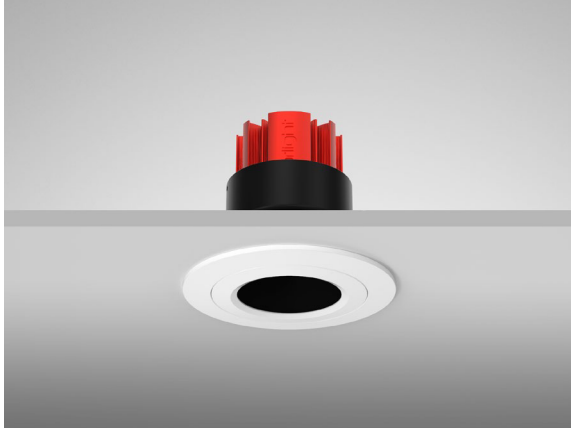


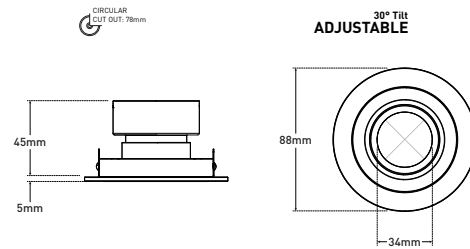
MAGNO - Fixed Magnetic Downlight



Description

Architectural downlight featuring an anti-glare baffle and magnetic lamp change mechanism. The recessed light source serves to minimise glare. **Images shown are for visual reference. Light source not included.**

Dimensions



Specification

Suggested Light Source	GU10: DYNA, DYNA-LUX ENGINE: DIABLO Range
Voltage	Max. 240V
Cut Out	78MM - Circular
IP Rating	IP20
Material	Aluminium
Finish	Epoxy Powder Coat; Metallic Finishes - Electroplate

Finishes



WHITE (RAL 9010)



WHITE (RAL 9016)



ALL WHITE (RAL 9010)



ALL WHITE (RAL 9016)



BLACK (RAL 9005)



CHROME



SATIN CHROME