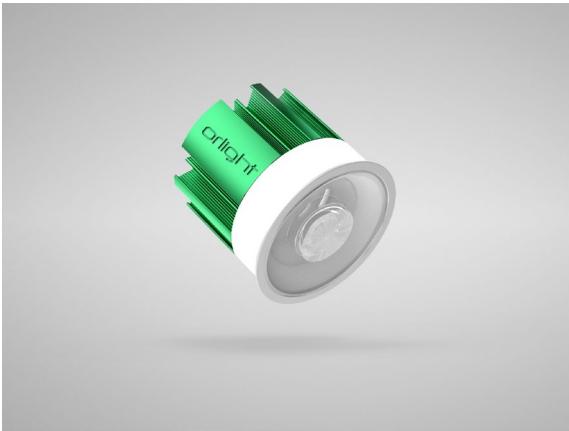




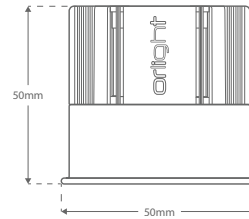
DIABLO8-F - R999 Engine - CRI92



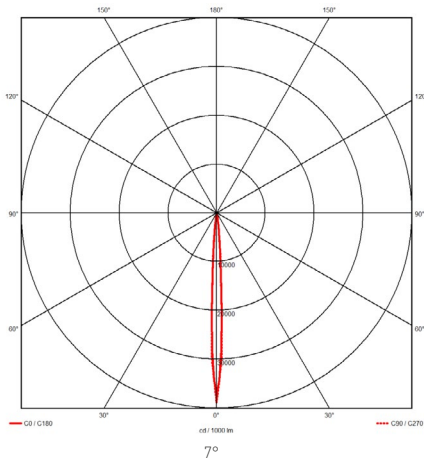
Description

The DIABLO8-F engine combines advanced thermal management with a 7W LED chipset to enable superior performance in the smallest of packages. The DIABLO8-F engine is supplied with 15°, 38° and 55° optic. Colour consistency is adhered to with 2-Step MacAdams Ellipse binning strategy and an R9 value in excess of 90. *\*Driver inclusive with product purchase.\**

Dimensions



Photometrics



Specification

Power	7W		
Voltage	36V		
Colour Temperature	2700K	3000K	4000K
Lumens	417 Lm	443 Lm	474 Lm
Lumens Per Watt	60 Lm/W	63 Lm/W	68 Lm/W
CRI	>97	>97	>97
Beam Angle	7°		
Dimming Options	Mains Dimmable		
Chipset	CREE XHP35		
Chip Life	L70 > 60,000 Hours		
Binning	2-Step MacAdams Ellipse		
IP Rating	IP20		
Finish	White Bezel; Black Bezel		

Colourmetrics



2700K

R1	R2	R3	R4	R5	R6	R7	R8
92	96	98	92	91	95	91	79
R9	R10	R11	R12	R13	R14	R15	
54	89	92	83	93	98	87	

3000K

R1	R2	R3	R4	R5	R6	R7	R8
92	94	96	93	92	93	93	82
R9	R10	R11	R12	R13	R14	R15	
57	86	93	82	92	97	88	

4000K

R1	R2	R3	R4	R5	R6	R7	R8
92	95	96	92	91	92	94	84
R9	R10	R11	R12	R13	R14	R15	
59	86	91	72	93	97	89	