

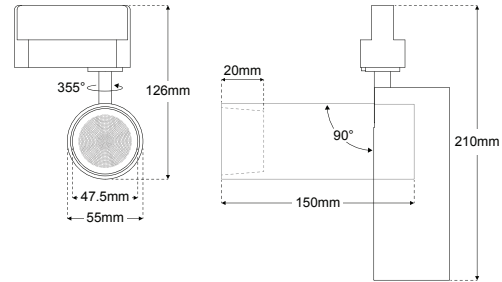
APOLLO - 15W Slim Adjustable Tracklight



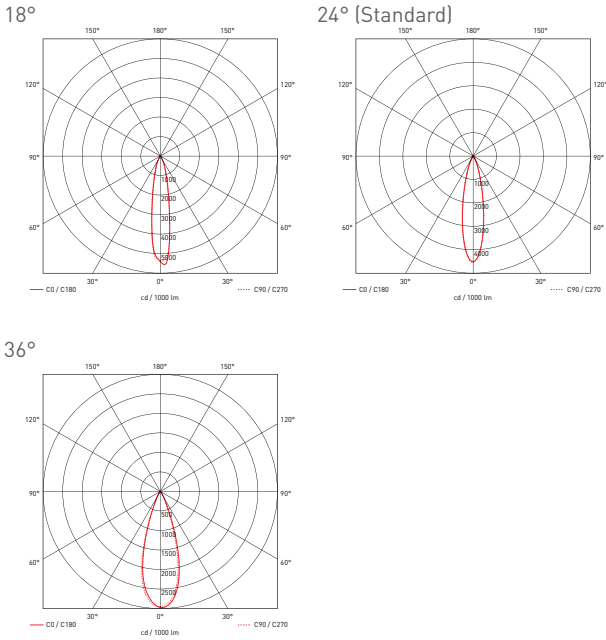
Description

Track lighting system combining slim cylinder housing design with integral LED driver. Versatile range of motion to 90° on the vertical axis and 355° rotation allowing for direction of light to application. A single chipset ensures uniformity of the light beam with interchangeable optics to 24° as standard and 18° and 36° and order only accessories. CRI >90 for light quality assurance, consistency is adhered to with a 3-Step MacAdams Ellipse binning strategy.

Dimensions



Polar Curve



Specifications

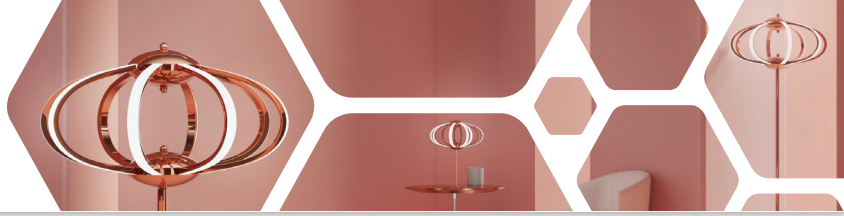
Light Source	CITIZEN CLU028-1202C4		
Dimming Options	Mains Dimmable		
Driver	Integral		
Rated Voltage	220-240V		
Rated Current	16A (Track And Connectors Rated to Maximum 16 Amps)		
Power Consumption	13W Module power / 15W Circuit Power		
Colour Temperature	2700K	3000K	4000k
Light Output	980 lm	1038 lm	1104 lm
Lm Per Watt	63 lm/W	67 lm/W	72 lm/W
CRI	>92	>92	>91
Beam Angle	24° (18° and 36° order only accessory)		
Rotation	355°		
Tilt	90°		
Binning	3-Step MacAdams Ellipse		
Chip Life TM-21	L80 >50,000 hours		
IP Rating	IP20		
Weight	465g (Max 5 fittings per 1M of track - 200mm spacing)		
Material	Aluminium		
Finish	Black RAL9005, White RAL9016		

Colourmetrics

2700k								3000k								4000k							
R1	R2	R3	R4	R5	R6	R7	R8	R1	R2	R3	R4	R5	R6	R7	R8	R1	R2	R3	R4	R5	R6	R7	R8
100	99	95	99	99	98	99	96	92	95	97	93	91	94	93	82	83	93	95	90	88	89	94	82
R9	R10	R11	R12	R13	R14	R15		R9	R10	R11	R12	R13	R14	R15		R9	R10	R11	R12	R13	R14	R15	
90	95	97	87	100	96	98		57	87	93	79	92	97	88		52	82	89	67	90	97	86	

Product Coding Example: APOLLO-15W-WH-3000K

CODE	WATTAGE	FINISH	COLOUR TEMPERATURE	ACCESSORIES
APOLLO	15W	BL (Black RAL 9005)	2700K	APOLLO-18D-LENS
		WH (White RAL 9005)	3000K	APOLLO-36D-LENS
			4000K	APOLLO-HC-MESH



Order Only Accessories

18° Lens



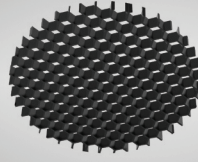
APOLLO-18D-LENS

36° Lens



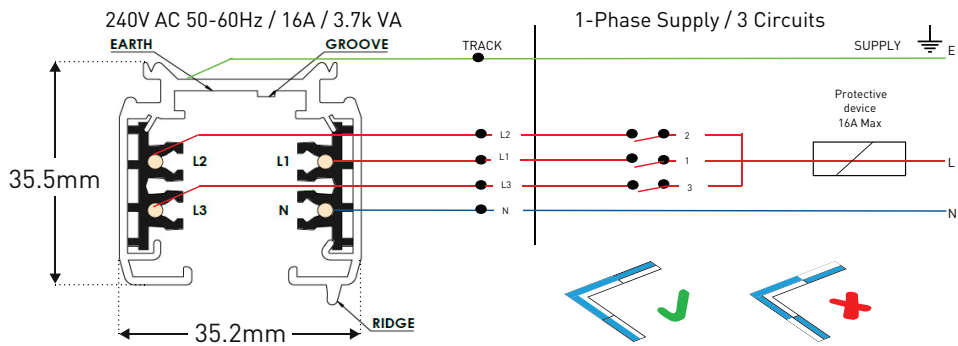
APOLLO-36D-LENS

Honeycomb Mesh



APOLLO-HC-MESH

Electrical Connections



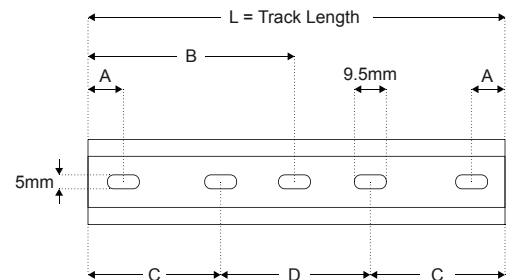
Continuity of the neutral marked in blue.

The track can be Cut to length by the installer if required.



Fixing Holes

L (mm)	A (mm)	B (mm)	C (mm)	D (mm)
1000mm	125			
2000mm	125	998		
3000mm	125		914	1167



GB - Track System and Operational Safety

Only the use of Orlight parts is allowed and they must be installed in accordance with the installation instructions.

If parts not belonging to this range are used or if any deviations from the installation instructions are made. It is then the user's responsibility to ensure the electrical, mechanical and thermal compatibility between the system and the fixtures attached to it. Orlight Ltd is not liable for incorrect installation of our products.

Warning!

Orlight Ltd lighting track systems

The use of any kind of solvent, glue, grease, oil, cleaner, etc in conjunction with this track light system is forbidden. Foreign materials can cause cracking and / or damage to the components for which Orlight Ltd will not be liable for.